



Liquid Asset
Partners LLC

Affiliated Foods Distribution Center Liquidation

12103 Interstate 30, Little Rock, AR
616-719-5917 phone / 616-719-5913 fax

9 WULFTEC Shrink Wrap Machines Available

WULFTEC Model: WRT-150

Serial: 11596-6-1103

Volts: 120 / Htz: 60 / Phase: 1 / Amp: 20



Serial: 11596-5-1103

Volts: 120 / Htz: 60 / Phase: 1 / Amp: 20



Serial: 11596-3-1103

Volts: 120 / Htz: 60 / Phase: 1 / Amp: 20





Liquid Asset
Partners LLC

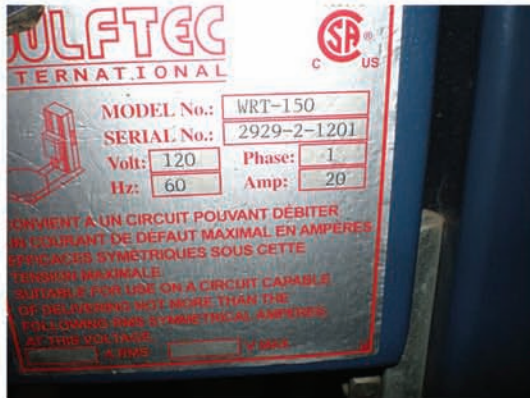
Affiliated Foods Distribution Center Liquidation

12103 Interstate 30, Little Rock, AR
616-719-5917 phone / 616-719-5913 fax

9 WULFTEC Shrink Wrap Machines Available WULFTEC Model: WRT-150

Serial: 2929-1-1201

Volts: 120 / Htz: 60 / Phase: 1 / Amp: 20



Serial: 11596-4-1103

Volts: 120 / Htz: 60 / Phase: 1 / Amp: 20



Serial: 2929-3-1201

Volts: 120 / Htz: 60 / Phase: 1 / Amp: 20





Liquid Asset
Partners LLC

Affiliated Foods Distribution Center Liquidation

12103 Interstate 30, Little Rock, AR
616-719-5917 phone / 616-719-5913 fax

9 WULFTEC Shrink Wrap Machines Available

WULFTEC Model: WRT-150

Serial: 2929-2-1201

Volts: 120 / Htz: 60 / Phase: 1 / Amp: 20



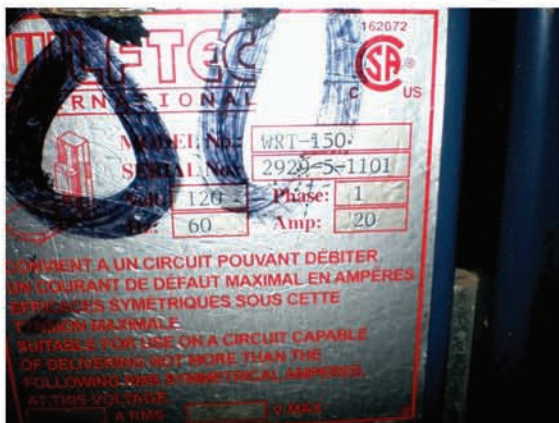
Serial: 2929-4-1201

Volts: 120 / Htz: 60 / Phase: 1 / Amp: 20



Serial: 2929-5-1201

Volts: 120 / Htz: 60 / Phase: 1 / Amp: 20





Liquid Asset
Partners LLC

Affiliated Foods Distribution Center Liquidation

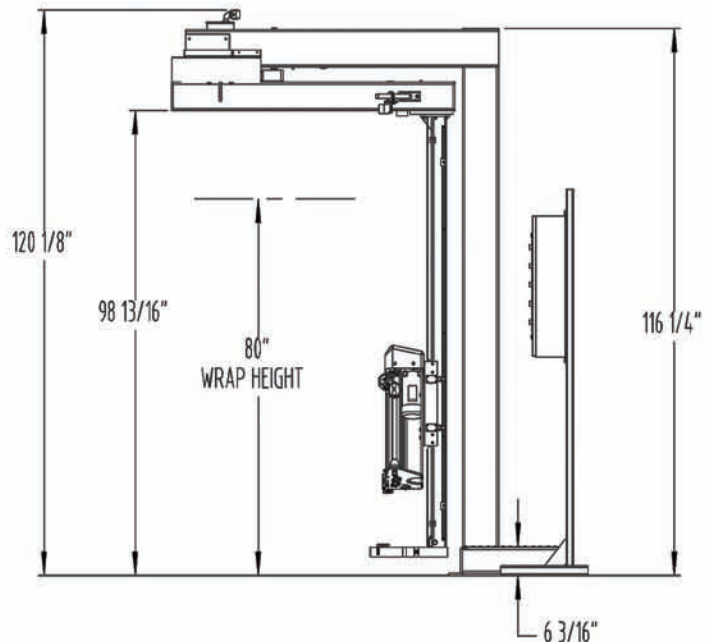
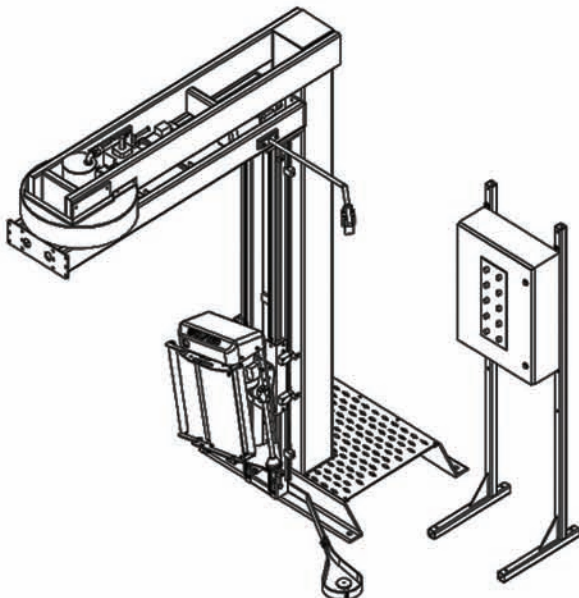
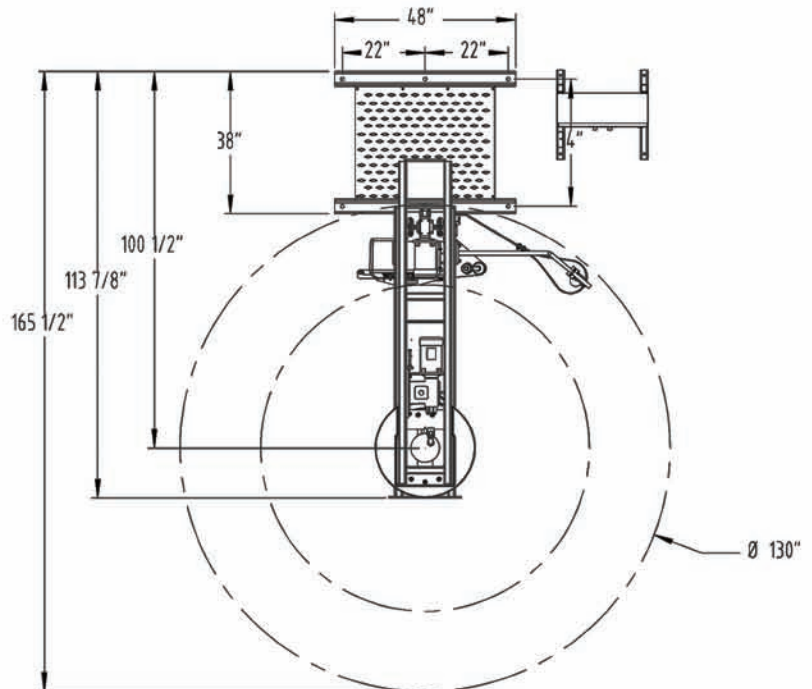
12103 Interstate 30, Little Rock, AR
616-719-5917 phone / 616-719-5913 fax

9 WULFTEC Shrink Wrap Machines Available

Spec listed below are from Wulftec's website.
Options may vary from units available for sale by Liquid Asset Partners.
Everything Sold "As Is Where Is" with no warranties or fitness implied.

WULFTEC Model: WRT-150

SEMI AUTOMATIC FREE STANDING ROTARY ARM
(WITH NO-THREAD® POWERED PRE-STRETCH CARRIAGE)





9 WULFTEC Shrink Wrap Machines Available

Spec listed below are from Wulftec's website.
Options may vary from units available for sale by Liquid Asset Partners.
Everything Sold "As Is Where Is" with no warranties or fitness implied.

WULFTEC Model: WRT-150

SEMI AUTOMATIC FREE STANDING ROTARY ARM
(WITH NO-THREAD® POWERED PRE-STRETCH CARRIAGE)

CAPACITIES

PRODUCTION

- Up to 50 pallets per hr., based on load size and configuration

LOAD WEIGHT

- Unlimited

APPROX SHIPPING WEIGHT

- 2,026lbs.

LOAD SIZE

- 52" x 52" x 80"H

ELECTRICAL REQUIREMENTS

- 120V/1/60 15A

MACHINE DIMENSIONS

- 130"W x 165½"L x 120⅞"H *
- * Overall dimensions of machine in operation

FEATURES

CONTROLS

- Allen Bradley Micrologix 1200 PLC
- 24V control system
- Current overload protection
- Nema 4/12 control cabinet with quick disconnect
- Auto-height sensing photoeye with on/off switch
- Power on/off switch and indicator light
- Start/stop push button
- Large emergency stop (push pull type)
- Manual carriage up/down switch
- Variable rotary arm speed (12 RPM)
- Separate up and down carriage speeds
- Separate top and bottom wrap selectors (0-9)
- Reinforce wrap/manual rotation control
- Positive arm alignment
- Top cover pause switch (Splash-proof Program)
- Spiral up or spiral up/down switch
- Film force to load control
- Double brush dust tight slip ring
- Emergency stop sensor for arm path obstruction
- Panel can be located up to 10' from machine frame

FILM DELIVERY SYSTEM

- 20" NO-THREAD® Powered Pre-Stretch Carriage
- 1/2 HP AC motor with Allen Bradley variable frequency drive
- 50-300% prestretch ratio (preset to customer spec, Std 200%)
- Electronic film tension control with analog sensor
- Lexan roller cover
- Film force release for easy pull at start and end of cycle
- Angled carriage to wrap approximately 2" from floor level

FILM CARRIAGE DRIVE

- 1/2 HP AC motor with Allen Bradley variable frequency drive
- Two #50 chain carriage lifts for safety
- Dual ½" CRS ways with UHMW-PE carriage glides
- Dual structural steel boom
- Power track for efficient guiding of wires

ROTARY ARM

- All structural steel construction
- Floor mounting with 10 anchor points
- 10" square tubing column

ROTARY ARM DRIVE

- 25" Ring Gear Bearing drive/support
- Max. 12 RPM variable speed
- 3/4 HP AC motor with Allen Bradley variable frequency drive
- Electronic soft start/stop
- Positive arm alignment controlled by proximity sensor
- Protection guard over the ring gear

STRUCTURE

- Floor mounting integrated design
- Heavy duty structural steel construction
- Easy access to all components
- Swivel option available

TECHNICAL INFORMATION

- The machine is provided with a manual including electro/mechanical schematics and drawings
- Trouble shooting guide
- Installation instructions

WARRANTY

- All Wulftec semi automatic machines come with a three year warranty. **All 25" ring gear bearings are warranted for ten years.**
- All Wulftec prestretch compound rollers have a lifetime warranty. (see Chapter 9 for complete warranty)